

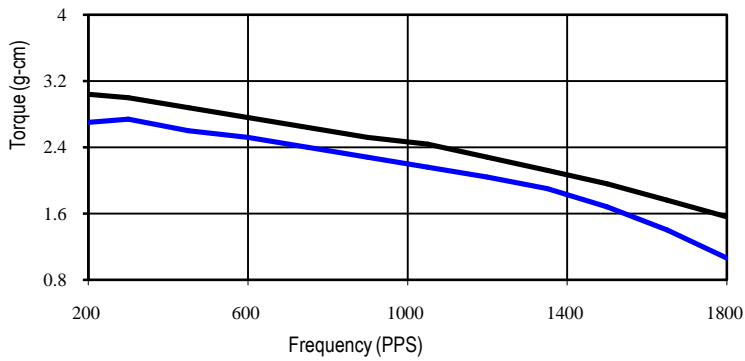
# T0809 Series

## SPECIFICATIONS

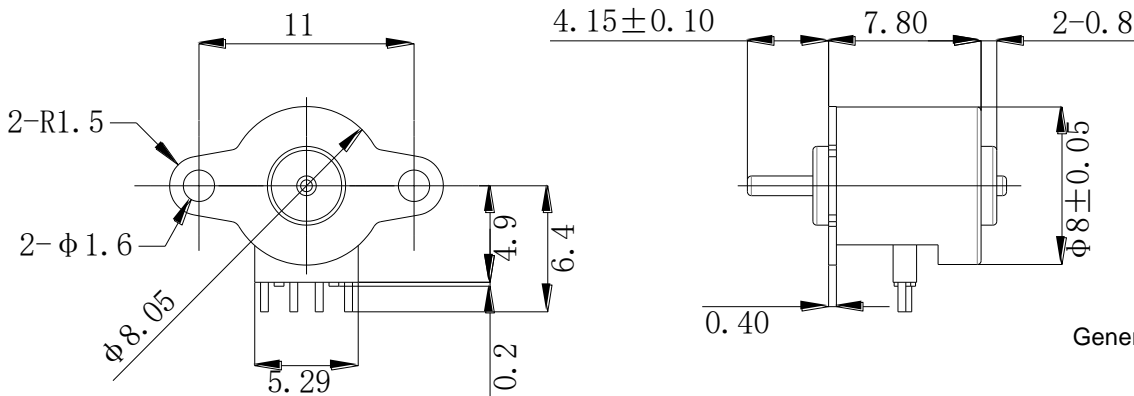
| Item                               | T0809N                                |
|------------------------------------|---------------------------------------|
| 1. Rated Voltage (V)               | DC 3                                  |
| 2. Rated Current/Phase (mA/RMS)    | 143                                   |
| 3. Coil DC Resistance (Ohm)        | 21±10%                                |
| 4. Step Angle (Degree)             | 18                                    |
| 5. Drive Mode                      | Constant Voltage                      |
| 6. Excitation Method               | 2-2 Phase excitation(Bipolar driving) |
| 7. Insulation Class                | Class E                               |
| 8. Pull-out Torque (g-cm/pps)      | 2.7/500                               |
| 9. Pull-in Torque (g-cm/pps)       | 2.4/500                               |
| 10. Max. Pull-out Pulse Rate (pps) | 2700                                  |
| 11. Max. Pull-in Pulse Rate (pps)  | 1700                                  |

## CHARACTERISTICS

T0809N(21Ω),DC 3V,143mA Bipolar



## DIMENSIONS



Unit: mm  
General Tolerance: ±0.1